

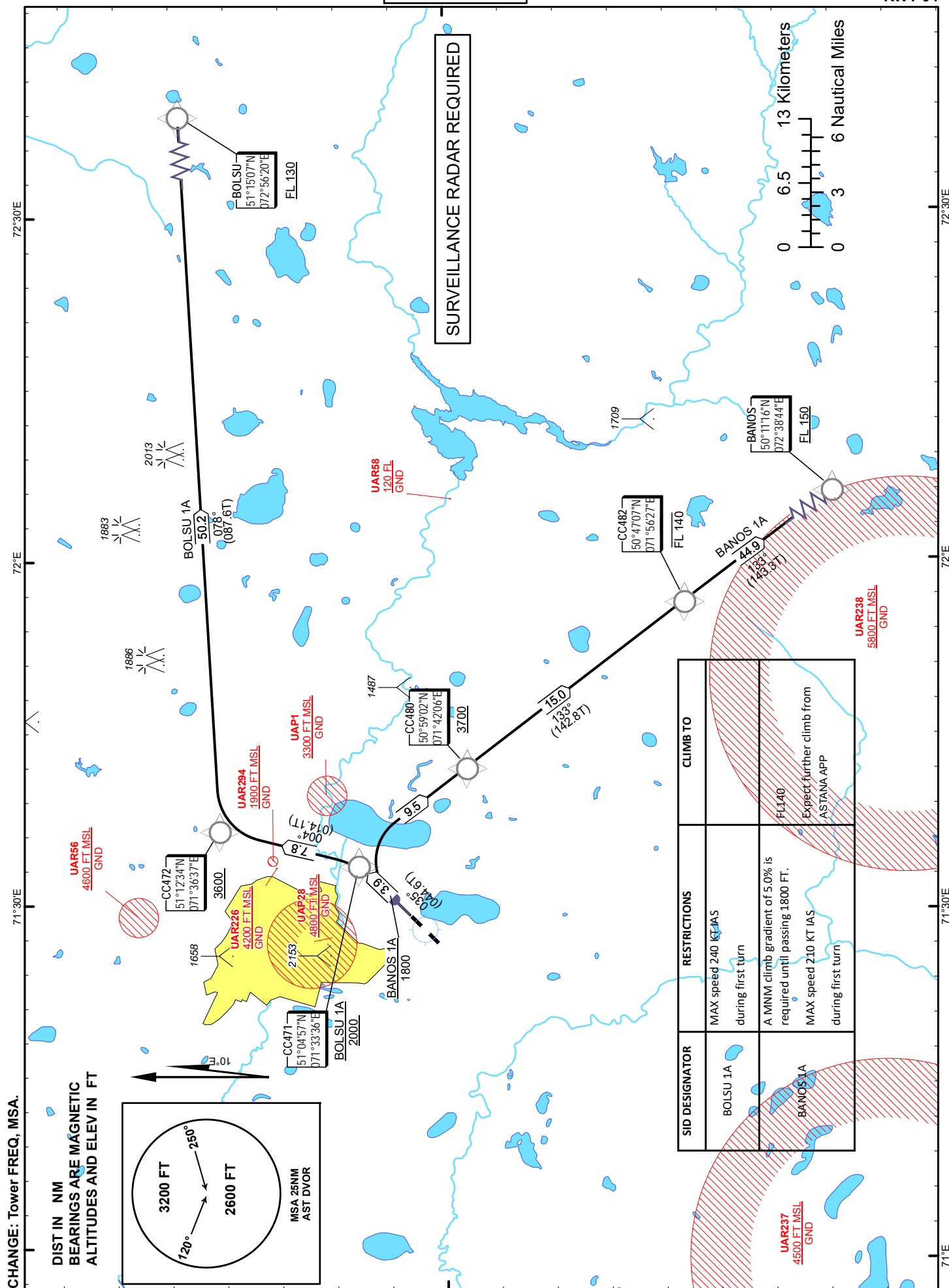
STANDARD DEPARTURE
CHART - INSTRUMENT
(SID) - ICAO

TRANSITION ALTITUDE
10000 FT

ASTANA TOWER 135.5
ASTANA APPROACH 124.6
ASTANA RADAR 120.7
ASTANA ATIS(EN) 129.5
ASTANA ATIS(RU) 128.3

BANOS 1A, BOLSU 1A
(RNAV 1 SID BASED ON GNSS)

ASTANA
NURSULTAN NAZARBAYEV
INTERNATIONAL AIRPORT
RWY 04



**TABULAR
DESCRIPTION**

BANOS 1A RWY04											
Serial Number	Path Descriptor	Waypoint Identifier	Fly - over	Course °M(°T)	Magnetic Variation(°)	Distance NM	Turn Direction	Altitude FT	Speed KT	VPA (°)	Navigation Specification
10	CA		-	35(44.6)	10	2.1	-	+1800	-210	2.9	RNAV1
20	DF	CC480	-		10	9.5	R	+3700		1.9	RNAV1
30	TF	CC482	-	133(142.8)	10	15	-	-FL140		1.9	RNAV1
40	TF	BANOS	-	133(143.3)	10	44.9	-	+FL150		1.9	RNAV1

WAYPOINT LIST

BANOS 1A		
Waypoint Identifier	Coordinates	
DER	510210.90N	0712915.64E
CC480	505902.26N	0714206.01E
CC482	504707.26N	0715627.27E
BANOS	501116.00N	0723844.00E

**TABULAR
DESCRIPTION**

BOLSU 1A RWY04											
Serial Number	Path Descriptor	Waypoint Identifier	Fly - over	Course °M(°T)	Magnetic Variation(°)	Distance NM	Turn Direction	Altitude FT	Speed KT	VPA (°)	Navigation Specification
10	CF	CC471	-	35(44.6)	10	3.9	-	+2000	-240	1.9	RNAV1
20	TF	CC472	-	04(14.1)	10	7.8	L	+3600		1.9	RNAV1
30	TF	BOLSU	-	78(87.6)	10	50.2	R	+FL130		1.9	RNAV1

WAYPOINT LIST

BOLSU 1A		
Waypoint Identifier	Coordinates	
DER	510210.90N	0712915.64E
CC471	510457.35N	0713335.86E
CC472	511233.52N	0713637.17E
BOLSU	511507.00N	0725620.00E